

# ReportWorX<sup>TM</sup> Microsoft<sup>®</sup> .net

## Enterprise Reporting, Charting and Analysis Software

*"Turn Data into Manufacturing Intelligence"*

### Manufacturing Intelligence Solution

Create, manage and deploy Web-based reports for the entire organization

### Based on Microsoft .NET Technology

Designed from the ground-up to take maximum advantage of Microsoft<sup>®</sup> .NET, Web Services and Microsoft Excel<sup>®</sup> technology

### Data Mine SQL, Oracle or Any Data Source

Data mine any corporate database. Integrate information from different data sources into one report. Combine industry standard OPC with SQL Server, Oracle, SAP, Plant Historians, OPC HDA and OPC A/E

### Easy-to-Use Report Scheduler

Create custom report schedules; trigger reports periodically, On Event, On Demand or On Time and Date

### Use the Power of Microsoft Excel

Use popular Microsoft Excel as your design tool to quickly create reports. Powerful ReportWorX plug-in connects to any data source

### Send Reports to Printers, Fax, E-mail or to the Web

Direct reports to redundant printers, fax, PDF files, disk drives, computer screen, to your entire organization via e-mail, or publish them to the Web

### International Language Switching

Print reports in different languages using ICONICS powerful language-switching technology

### Scalable Enterprise-wide Reporting

Designed to scale from the simplest report to the most demanding applications with hundreds of reports

### Visualize Your Enterprise

Create reports that transform corporate data into valuable information

### Industry Standard Reports

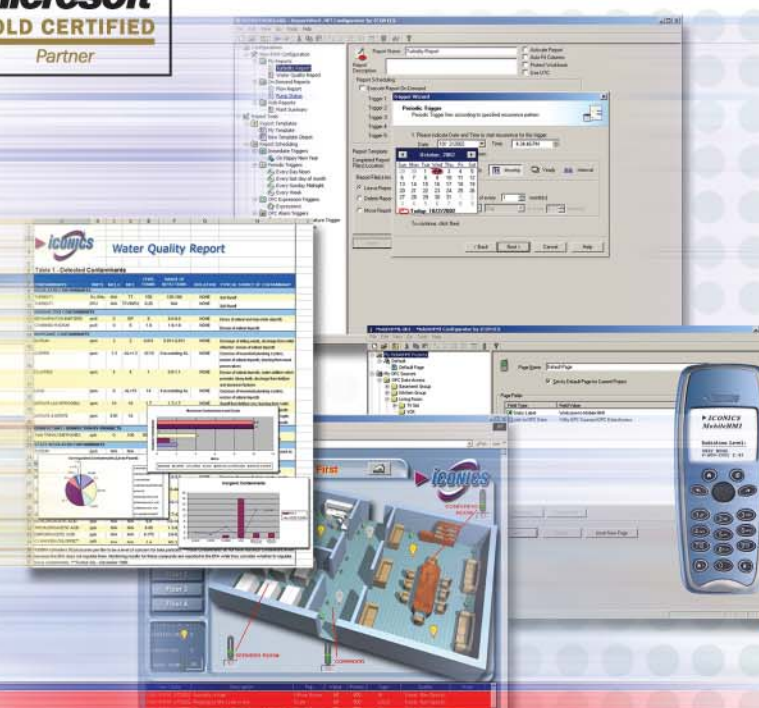
Comes with standard report templates, for Production, Water, EPA, FDA, Quality, Material Handling and more



*"Turn volumes of data from different sources into powerful and useful information!"*



**Visualize Your Enterprise!<sup>TM</sup>**







# ReportWorX<sup>™</sup> .net Microsoft

Turn Data into Manufacturing Intelligence

**Advanced Reporting** has never been easier! Looking for a powerful reporting tool that is easy to learn, quick to apply and works with any data source, including popular HMI, SCADA, MES and control systems? Or want to connect to real-time OPC data as well as databases such as, SQL, Oracle, SAP, Aspen Tech, OSI PI and more. Look not further!

## Advantages of ReportWorX

Designed from the ground up and based on Microsoft .Net and Excel's technology ReportWorX turns volumes of data into Manufacturing Intelligence. Transforming data from any data source into reports is fast, efficient and a snap to setup. ICONICS brings you the most advanced reporting tool available today, taking maximum advantage of Microsoft's most powerful technologies. ReportWorX uses Microsoft.Net technology to push data into your report worksheet, forms, and control the execution of these Excel Forms without the need for Excel to be visible or executing! Workbook duplication, manipulation, chart and data updates, formula recalculation and automatic print out and scheduling is complete performed by ReportWorX.

## Comes with Standard Industry Reports

ReportWorX comes complete with standard report templates, for Downtime Analysis, Production, Water, EPA, Quality, Energy, and many more. Ideal for some of the following industries:

- Automotive & Robotics
- Building Controls and Security
- Business and Financial Systems
- Water and Wastewater
- Pharmaceutical and Biotechnology
- Oil, Gas and Chemicals
- Food and Beverage
- Power and Utilities

For further information call

**1-508-543-8600**

or visit our website

**www.iconics.com**



**Visualize Your Enterprise!™**

## The Ideal Choice

Producing reports complements and finalizes any project. ReportWorX is the ideal tool for creating, scheduling and redirecting reports to be sent to redundant printers, fax, computer screens, PDF files, local or remote disk drives. Even publish reports to a Web server or send them to your entire organization via e-mail!

- ReportWorX can handle any real world reporting application.
- Powerful enough to create the most sophisticated reports but friendly and easy enough for the beginner.
- Whether you need reports occasionally or daily, ReportWorX is the ideal product to meet your needs.

## Connect and Data Mine to Any Data Source

Using ICONICS data integrator technology, ReportWorX integrates with any data source such as Microsoft® SQL Server, MSDE, Microsoft Access, Oracle®, SAP, custom databases and more. Integrate information from a real-time OPC data source as well historical data sources. ReportWorX is optimally designed to work with ICONICS GENESIS32 Data Historian (TrendWorX32), Alarm Logger / Historian (AlarmWorX32) and OPC real-time Data Exchange product (DataWorX32). ReportWorX can integrate with other popular Data Sources such as:

- HMI, SCADA and DCS Systems
- Building and Security Systems
- Maintenance Systems
- LAB Information Systems
- Plant Historians, MES and ERP
- Corporate & Manufacturing Production Databases

## The Power of Microsoft Excel

Use Microsoft Excel as your design tool to quickly create powerful reports that connect to real-time or any data source, including OPC, SQL Server, Access, other Excel worksheets, Oracle, SAP as well as custom data sources. ReportWorX is a complete reporting system that automatically manages data in Excel Workbooks, creates Excel Workbooks, performs all the data collection from real-time and database data sources in one easy-to-configure product. Results are automatically redirected to any output.

## Easy-to-Use Report Scheduler

At the heart of ReportWorX is the Scheduling Engine, which allows for the simultaneous execution of reports. These reports can be triggered for execution on the following criteria:

- On demand by operator command over the Web or from an HMI
- Periodically based on time and or date
- Based on alarm or event
- Based on OPC real-time tag
- Based on an expression or calculation
- Based on a database value

## Web-Enable Your Reports

Reports can be automatically published to Web Servers so that any user can access reports with a standard Web browser over the Internet or within a secure corporate intranet. Reports are converted to Web forms, and a Web-based navigation system is automatically created to allow the easy management of archived reports. ReportWorX comes with a Web management feature so that they can be started or stopped, managed and scheduled, completely over the Internet using any Web browser.

## International Language Switching

For organizations requiring reports in different languages, ReportWorX includes a powerful international language capability. Reports can be created in different languages. Reports containing text, engineering units, currency calculations and more, can be indirectly referenced so that reports can be deployed to different individuals speaking different languages or to completely different locations in other countries.

## Scalable Enterprise Report Architecture

ReportWorX is based on Microsoft.NET and is designed to scale from the simplest single report application to complex demanding reporting applications. Create and deploy just a few reports that run simultaneously on a single CPU Server or deploy your application to an entire enterprise running on multiprocessor servers. ReportWorX takes full advantage of Symmetric Multiprocessing, IT and Web infrastructures.

100 Foxborough Blvd. Foxborough, MA 02035 USA, Tel: 508-543-8600, Fax: 508-543-1503  
Europe BV, Tel: 31 252 228 588, Fax: 31 252 226 240 • England, Tel: 44 1384 27 55 00, Fax: 44 1384 40 16 42  
Germany, Tel: 49 5066 90 11 84, Fax: 49 5066 90 11 86 • Australia, Tel: 61 29 898 3211, Fax: 61 29 898 3411  
Czech Republic, Tel: 420 377 326 139, Fax: 420 377 237 109 • Italy, Tel: 39 347 8199250, Fax: 39 010 6014091  
E-Mail: [info@iconics.com](mailto:info@iconics.com) Web: [www.iconics.com](http://www.iconics.com)

© 2004 ICONICS, Inc. All rights reserved. GENESIS, GENESIS32, Pocket GENESIS, Embedded GENESIS, GraphWorX, AlarmWorX, TrendWorX, DataWorX, ProjectWorX, VCRWorX, TraceWorX, WebHMI, GenBroker, ControlWorX, MachineWorX, ToolWorX, ToolBox, BizViz, ReportWorX, BridgeWorX, PortalWorX, MobileHMI, Visualize Your Enterprise, and OPC-To-The-Core are trademarks of ICONICS Inc. Microsoft, Windows, ActiveX, Visual C++, Windows NT, and Visual Basic are either registered trademarks or trademarks of Microsoft Corporation in the United States and/or other countries. IBM and PC are trademarks of International Business Machines Corp. Other product and company names mentioned herein may be trademarks of their respective owners.