

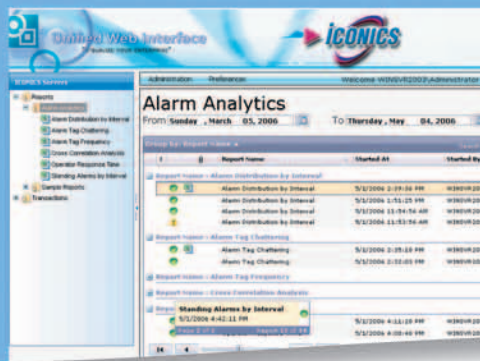
BizViz Analytics™

Real-Time Intelligence for Agile Operations



a suite of analytics solutions
that maximizes your production efficiency



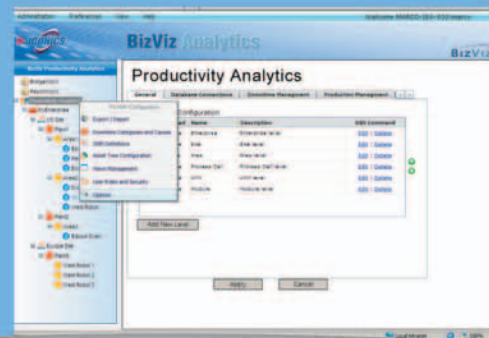
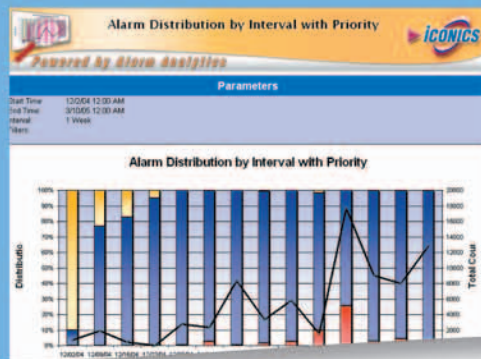
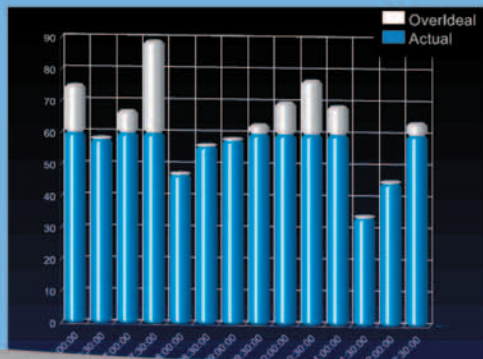


*“Make better
decisions faster
with the utmost
confidence”*

THE BIZVIZ ANALYTICS SUITE

ICONICS empowers decision makers at all levels of the enterprise with real-time and accurate information to help them drive global operational efficiency and strengthen their competitive market advantage. Gain insight into your operations through real-time data aggregation and connectivity to multiple data sources, presented in an intuitive and intelligent manner. BizViz Analytics helps to establish manufacturing context with Key Performance Indicators (KPIs) and deliver manufacturing intelligence to the entire organization through powerful features such as:

- **Fast, efficient thin-client Web-based configuration** for managing your entire Analytics application from any Web-enabled browser. Create new assets, modify existing ones, manage shift schedules, assign downtime causes, administer user permissions and much more.
- **Configurable Key Performance Indicators (KPIs)** for real-time performance tracking against set targets. The BizViz KPI library includes plant-specific calculations such as **OEE, TAKT Time, Lead Time, Productivity, Throughput** and **Right First Time**, and supports other continuous improvement initiatives such as: **Lean Manufacturing, Six Sigma** and **Demand Pull** process improvement initiatives.
- **Automated and on-demand reporting** capabilities with advanced analytic functions that help decision makers visualize trends, perform root cause analyses, and identify opportunities for performance improvement.
- **Powerful, intuitive Web-based user interface** that allows client users to configure and navigate to any asset in three clicks or less. The customizable nature of the navigation tree's hierarchy allows quick exploration of your assets in a way that mimics your production layout.
- **Real-time alert notification** provides instant information about process exceptions and KPI tolerance deviations, enabling personnel to respond quickly before the problems impact business performance.
- **Alarm performance benchmarking** against industry standard best practices such as the EEMUA (Engineering Equipment and Materials Users' Association) to provide operators with a detailed understanding of their alarm system.
- **Wireless alerts and instant access to KPIs from mobile devices** enable remote employees to monitor OEE trends, update production targets, and acknowledge alarms.
- **Role-based, secure dashboards** that integrate fully with the Microsoft Active Directory security architecture. All dashboards and views are tied into **ICONICS'** role-based security system allowing end users to see only the data that is relevant to them.
- **Flexible shift scheduling** that accommodates the most demanding plant schedules.



VERTICAL MARKETS

ICONICS products are currently used in a wide range of industries.

Aerospace & Defense
Automotive
Biotechnology
Building Automation
Chemical & Petrochemical
Consumer Packaged Goods
Financial
Food and Beverage
Government
Machine Builders
Metals & Mining
Oil & Gas
Pharmaceuticals
Power & Utilities
Pulp & Paper
Semiconductors
Water & Wastewater

Productivity Analytics

Visual OEE, KPIs and Analysis for Operational Excellence

Today's manufacturing environment demands information in real time. It is no longer sufficient to operate solely based on yesterday's data, or even data from the previous shift. BizViz Productivity Analytics™ provides powerful data mining technology to track real-time key performance indicators (KPIs) such as throughput, OEE, utilization, yield, availability, uptime, cycle time and many more. Its powerful thin-client Web Interface allows users to design, develop, and deploy dashboards to effectively visualize vast amounts of available manufacturing and business information at a glance.

Allowing users to drill into the root cause of every downtime event is a way to correlate seemingly random data together into actionable intelligence. Operators can layer real-time views on top of historical or "ideal" performance data to help establish preventive maintenance procedures and avoid future unplanned downtime. An intuitive Web-based navigation system allows users to traverse data efficiently, while the customizable navigation tree hierarchy allows exploration of assets in a way that mimics production layouts to view relevant data at any level of the enterprise.

Productivity Analytics helps operators, supervisors, and managers respond to pressures within today's manufacturing environment by reducing cycle times, lowering costs, identifying improvement opportunities to streamline processes and getting more out of their assets. Standard out-of-the-box charts and reports help line managers schedule preventive maintenance and operate under-utilized and over-utilized equipment more efficiently. Shift schedules can easily be defined with an intuitive Microsoft Outlook-style interface. Properly maintained equipment results in less overall downtime, which, in turn, results in higher production efficiency.



Alarm Analytics

Alarm Management, Reporting and Analysis

BizViz Alarm Analytics™ provides rapid analysis, visualization, reporting and management of alarms, resulting in improved plant reliability, faster response times and deeper process understanding. Operators improve efficiency by uncovering alarm patterns, events and improved response times.

Alarm Analytics meets the OSHA PSM 1910.119 and EEMUA 191 specifications, giving users the highest level of compliance available today. Plant personnel can quickly visualize, analyze, and manage alarm information in accordance with industry best practices. Proper analysis of alarms and events can reveal significant opportunities for improving current operations and mitigating abnormal situations. Alarm Analytics captures and analyzes the following:

- Alarm Distribution by Interval
- Alarm Tag Frequency
- Alarm Distribution by Priority
- Alarm Tag Chattering
- Cross-Correlation Analysis
- Alarm Distribution by Interval with Priority
- Alarms from Worst Actors by Interval
- Operator Changes by Interval
- Operator Response Time
- Standing Alarms at Time
- Standing Alarms by Interval
- Standing Alarms Duration





Business Intelligence for Manufacturing



INDUSTRY CHALLENGES

In today's world, facilities and industrial manufacturers are coping with ever increasing global competition while customers are demanding more innovative products at lower prices. At the same time, those companies are dealing with the unprecedented complexity of enterprise information to serve many types of customers while managing changing production schedules, coordinating numerous manufacturing plants, and ensuring regulatory and legal compliance.

At present, the essential information required to run an agile and efficient business is scattered across disparate systems. The customer shipping location is in the CRM system, the order number and quantity are in a separate order management system, the product inventory levels are in either ERP or SCM systems, and the plant's capability to make the product is in the MES system. Pulling the fragmented information together is both time consuming and difficult, leaving decision makers with an inaccurate, incomplete and outdated picture of what is actually happening within their enterprise. This lack of real-time visibility into manufacturing operations not only impairs overall business performance but also drives up costs and hinders customer satisfaction.

The BizViz logo features the word "BizViz" in a bold, blue, sans-serif font. Above the text is a stylized graphic of a blue swoosh with a small star at its peak.The Genesis 32 logo features the words "GENESIS 32" in a bold, blue, sans-serif font. Above the text is a stylized graphic of a blue swoosh with a small star at its peak.The Genesis 64 logo features the words "GENESIS 64" in a bold, blue, sans-serif font. Above the text is a stylized graphic of a blue swoosh with a small star at its peak.

WHY CHOOSE ICONICS

ICONICS, Inc. is a leading provider of award-winning enterprise manufacturing intelligence and automation software solutions and implementation services. **ICONICS** solutions deliver real-time visibility into all enterprise operations and systems, helping companies to be more profitable, agile and more efficient. **ICONICS** products have delivered value to over 5,000 customers worldwide and have been chosen by more than 70% of Fortune 500 manufacturers.

MINIMUM REQUIREMENTS

- 3.0 GHZ Processor or higher
- 2 GB Physical Memory (RAM) or more
- 100 GB Hard Disk space available
- Windows XP/2003/Vista/2008
- SQL Server 2005 or
SQL Server 2005 Express Edition
- Microsoft .NET Framework 2.0 and 3.0
- Internet Information Services 5.1 or higher
- Internet Explorer 6.0 or higher



Visualize Your Enterprise™

VISIT US AT WWW.ICONICS.COM

WORLDWIDE OFFICES

World Headquarters

ICONICS, Inc.
100 Foxborough Blvd.
Foxborough, MA 02035 USA
ph: 508-543-8600
fx: 508-543-1503
info@iconics.com

Australia
ph: 61-297-273-411
fx: 61-297-273-422
australia@iconics.com

Czech Republic
ph: 420-37-718-3420
fx: 420-37-718-3424
czech@iconics.com

Germany
ph: 49-224-114-82233
fx: 49-224-114-82686
germany@iconics.com

Italy
ph: 39-347-819-9250
fx: 39-010-601-4091
italy@iconics.com

Netherlands
ph: 31-252-228-588
fx: 31-252-226-240
holland@iconics.com

United Kingdom
ph: 44-138-427-5500
fx: 44-138-440-1642
info@iconics-uk.com

France
ph: 33-045-019-1180
fx: 33-045-001-0870
france@iconics.com

China
ph: 86-130-684-86069
china@iconics.com

Hong Kong
ph: 852-21-505-797
china@iconics.com

©2008 ICONICS, Inc. All rights reserved. Specifications are subject to change without notice. GENESIS64, GENESIS32, Pocket GENESIS, BizViz and their respective modules, OPC-To-The-Core, and Visualize Your Enterprise are trademarks of ICONICS Inc. Other product and company names mentioned herein may be trademarks of their respective owners.

