

Automotive

Web-Enabled Software Meeting the Needs of the Automotive Industry

HMI Solutions for Automotive Manufacturing

Extensive alarming, trending, reporting, visualization and IT data integration

Project Management and Deployment Tools

Easily deploy projects, collaborate and manage applications

Reduce Cost of Integration and Ownership

Open architecture protects investment from hardware obsolescence

Data Historian Logs to Secure Databases

Industry standard databases such as Microsoft® SQL Server, MSDE, Microsoft Access™, Oracle® and more

Web-Based Visualization for Plant-Wide Manufacturing

View cell and station information via the Internet and intranet using a Web browser

Connect Real-Time Production to Corporate IT Systems

Integrate factory and plant floor information

Plug and Play with Popular PLCs and Existing HMIs

Fast, easy OPC communications without multiple tag databases

Reduce Downtime with Multimedia Alarm Notification

Schedule and deliver operator alerts via e-mail, phone, fax, SMS pagers and more

Mobilize Operators, Maintenance and Management Personnel

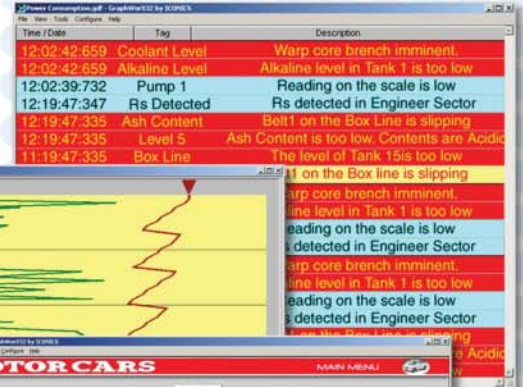
Access critical data via intranet, Internet, Web, Pocket PCs, or mobile phone

Security Server Enforces Logins and Monitors Access 24/7

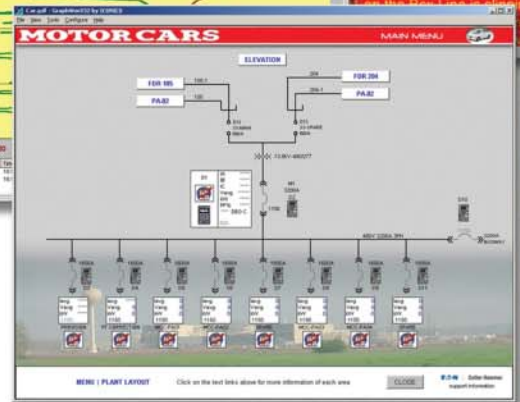
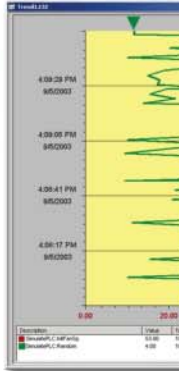
Global security across corporate LANs, WANs and the Internet

Automated Reporting and Data Analysis

Collect and report birthing information, production counts, machine utilization, SPC and quality data



Time / Date	Tag	Description
12:02:42:659	Coolant Level	Warp core breach imminent.
12:02:42:659	Alkaline Level	Alkaline level in Tank 1 is too low
12:02:39:732	Pump 1	Reading on the scale is low
12:19:47:347	Rs Detected	Rs detected in Engineer Sector
12:19:47:335	Ash Content	Belt1 on the Box Line is slipping
12:19:47:335	Level 5	Ash Content is too low. Contents are Acidic
11:19:47:335	Box Line	The level of Tank 15is too low



**"Proven Innovative Solutions
for Automotive Manufacturing"**



Visualize Your Enterprise!™

The **ICONICS GENESIS32™** suite of applications offers features and functions specifically designed to aid in the cost-efficient management and control of automotive manufacturing operations.

Automotive Industries Served

For systems requiring extensive monitoring and control, the following automotive industries are benefiting from ICONICS' solutions:

- Factory Information Systems (FIS)
- Manufacturing Assembly
- Power Train Assembly
- Engine Test
- Paint Shop
- Robotic Welding and Material Handling
- And Many More...

Benefits

Customers who are deploying ICONICS solutions within their automotive manufacturing operations will enjoy many potential benefits:

- Enhanced quality control through SPC and SQL
- Real-time data exchange with suppliers
- Scalable solutions from embedded controllers to full operator stations
- Interact with your plant from a browser, wireless handheld device, or mobile phone



For further information call
508-543-8600
or visit our Web site at
www.iconics.com



Visualize Your Enterprise!™

Automotive

Overview

The **ICONICS GENESIS32™** automation software suite provides automotive companies with powerful tools to minimize downtime, reduce costs of operation, minimize applications development and bridge the gap between corporate IT and the production floor.

HMI Solutions for Automotive Manufacturing

Fast and easy integration into your product solutions using state-of-the-art technology, fifth generation HMI, SCADA and control software applications as a fully integrated suite or as modular components to your requirements.

Project Management and Deployment Tools

Deploy a project by simply packing it and then unpacking it on the target computer. GENESIS32 is integrated with Microsoft Visual SourceSafe® technology for accurate project management.

Reduced Cost of Integration and Ownership

Open standards such as OPC, Microsoft® Windows®, and Microsoft SQL Server® databases protect your automation investment from manufacturers' proprietary technology obsolescence that can come with changes in supplier strategy, ownership or finances.

Data Historian Logs Data to Secure Standard Databases

Both the **ICONICS AlarmWorX32** Logger and the **ICONICS TrendWorX™32** Logger record their information to industry standard databases, including Microsoft SQL Server, MSDE, Microsoft Access, and Oracle.

Web-Based Visualization for Plant-Wide Manufacturing

With thin-client WebHMI solutions, automotive users no longer need to install proprietary HMI software, licenses and individual HMI screens on each operator station. Files and licensing are server-based for trouble-free maintenance and deployment.

Connect Real-Time Production to Corporate IT Systems

Any data available with proper security through your IT network may be displayed or modified within the GENESIS32 software suite via OPC, ODBC and OLEDB open database connectivity. Database-to-database transactions and reporting are flexible with **ICONICS' BizWorX.NET™** and **ReportWorX.NET™** software.

Plug and Play with Popular PLCs and Existing HMIs

Connect to existing devices quickly and easily using open-standard OPC servers. Connect directly to dozens of popular existing PLCs and other automation equipment for fast communications.

Reduce Downtime with Multimedia Alarm Notification

Quickly alert operations, maintenance and purchasing personnel to problems. **AlarmWorX™32** Multimedia, which is based on OPC Alarm and Events, provides alarm summary reporting and alarm logging to Microsoft Access, MSDE, Microsoft SQL Server and Oracle® databases. Connect alarms to e-mail, faxes, telephones, marquees, pagers, instant messaging, SMS, mobile phones and voice systems. Be notified wherever you may be!

Mobilize Operators, Maintenance and Management Personnel

Make operators and managers more efficient with flexible access to data wherever they may be. WebHMI delivers operator and supervisory screens across intranets or the Internet with full global network security.

Security Server Enforces Logins and Monitors Access 24/7

GENESIS32 delivers its full security system across a company's intranet or even across the Internet. So whether logged onto a local workstation or dialing in from home, the system is secure and traceable. The **ICONICS GENESIS32** suite of software applications offers the Security Server, a software component designed to restrict user access rights to various parts of the system. Not only are certain files and/or applications restricted, but specific features within the software modules may also be restricted on a per-user basis.

Automated Reporting and Data Analysis

Production data collected from any plant floor data source can quickly and easily be visualized in Microsoft Excel. Choose a pre-built template or create your own. Information from different data sources can be merged and viewed on a single worksheet. Reports can be scheduled based on a wide variety of events such as time, date, alarm level and calculation.

100 Foxborough Blvd. Foxborough, MA 02035 USA, Tel: 508-543-8600, Fax: 508-543-1503
Europe BV, Tel: 31-18-269-0055, Fax: 31-18-269-0052 • England, Tel: 44-138-440-2183, Fax: 44-138-440-1642
Germany, Tel: 49-731-98588-760, Fax: 49-731-98588-764 • Australia, Tel: 61 29 600 3904, Fax: 61 29 602 0777
Czech Republic, Tel: 420-377 326 139, Fax: 420-377 237 109 • Italy, Tel: 39 347 8199250, Fax: 39 010 6014091
E-Mail: info@iconics.com Web: www.iconics.com

© 2003 ICONICS, Inc. All rights reserved. GENESIS, GENESIS32, Pocket GENESIS, GraphWorX, AlarmWorX, TrendWorX, ProjectWorX, ReportWorX, TraceWorX, WebHMI, MobileHMI, GenBroker, ControlWorX, ToolWorX, ToolBox, GENESIS for Windows (GFW), GENESIS BizViz, Visualize Your Enterprise, and OPC-To-The-Core are trademarks of ICONICS Inc. Microsoft, Windows, ActiveX, Visual C++, Windows NT, and Visual Basic are either registered trademarks or trademarks of Microsoft Corporation in the United States and/or other countries. IBM and PC are trademarks of International Business Machines Corp. Other product and company names mentioned herein may be trademarks of their respective owners.